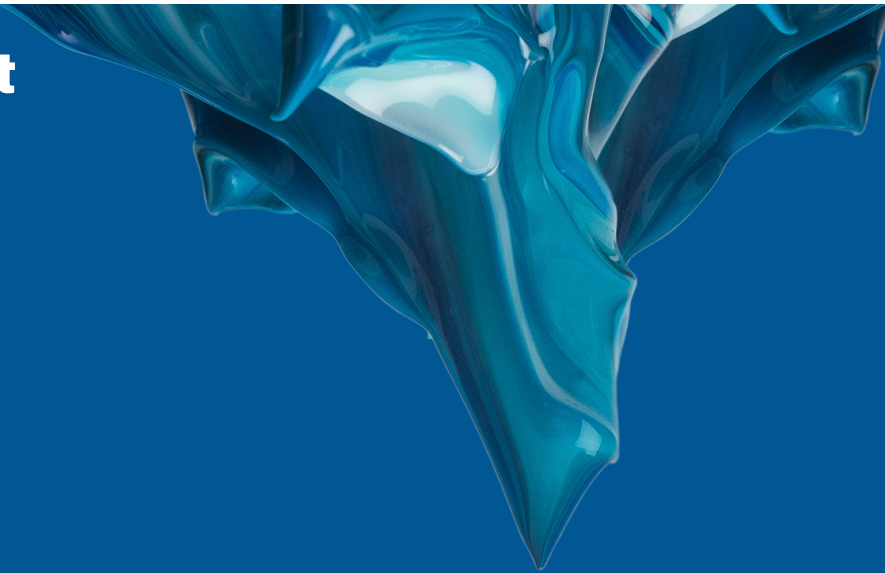


**Tri-Art**  
MANUFACTURING



# HIGH VISCOSITY

## Product Catalogue

Professional Level  
Finest Quality Line

Proudly Canadian  
[www.tri-art.ca](http://www.tri-art.ca)



**Tri-Art Manufacturing**  
4 Harvey Street, Kingston, ON, K7K 5B9



# Table of Contents

|                               |   |
|-------------------------------|---|
| Introduction . . . . .        | 2 |
| Colours . . . . .             | 3 |
| Application/Surfaces. . . . . | 4 |
| Colour Chart. . . . .         | 5 |





**Tri-Art**

# High Viscosity

A high-performance paint known for its unique consistency and vibrancy.

## What makes H.V. unique?

High Viscosity is Tri-Art's premium line of acrylic paint. It is the thickest format with the largest colour selection. The unique consistency gives the user the ability to create bold, crisp impasto effects and also to maintain the fidelity of a brushstroke; attributes normally associated with oil paints. This line is a showcase of our ability to make highly-chromatic, clean and vibrant colours. There are signature ones unique to us such as Transparent Permanent Orange, Quiller Violet and the beguiling Liquid Mirror.

# Colours

PROFESSIONAL LEVEL – FINEST QUALITY SERIES

## What makes H.V. premium?

High Viscosity is Tri-Art's premium Finest Quality line. It has the highest grade pigments, concentration and purity of ingredients possible. No fillers or extenders are used allowing for authentic pigment characteristics and colour chroma. All colours have very good to excellent resistance to fading and stability over time. Traditional colours often associated with oils have been sourced as well as new synthetic organic pigments with drastically improved permanence and vibrancy. They are formulated with 100% acrylic emulsion to give the best adhesion, tensile film strength, and longevity possible.

## Grinding of pigments

All colours of the spectrum are represented in the High Viscosity line. For certain colours there is a transparent and opaque version available. The colour's gloss, satin or matte finish as well as the opacity and transparency will be dictated by the inherent pigment properties and our grinding process. The finer the grind of the pigment, the more transparent and glossier the colour will be. Opaque colours contain coarser pigments and are more opaque and matte.

finely ground pigment



coarsely ground pigment



Finely ground pigment: PY 42  
Transparent Yellow Oxide Series #4

Coarsely ground pigment: PY 42  
Yellow Oxide Series #1

**Extensive grinding of pigments achieves transparent and glossy colours.**



# Applications & Surfaces

PROFESSIONAL LEVEL – FINEST QUALITY SERIES

**Colours have a smooth, buttery texture.**



## Application

High Viscosity paints are packaged in tubes and jars. Their viscosity makes them ideal for thick painting techniques. Colours are easy to manipulate with a brush or palette knife. They may be used straight from the jar/tube or mixed with any Tri-Art acrylic medium to extend volume, thin, glaze or create heavy-textured applications. Due to the high pigment concentration, using mediums to extend colours is recommended for the paint to perform the way it is intended. They are compatible with all other Tri-Art acrylic products. Always test your products and methods prior to applying to a final work. Colours are permanent once dry.

### MEDIUMS

F.Q. Gel Medium shares the same viscosity as High Viscosity colours. Consistency and chroma will not be reduced when mixed with colours. F.Q. Polymer Mediums will reduce the viscosity and maintain chroma of the colours.

## Appropriate Surfaces

Using a surface prepared with a Tri-Art Gesso provides:

- Toothy surface for extra paint adhesion.
- A colour reflective or absorbant surface.
- Barrier to prevent paint absorption into substrate.

Once dry, colours will remain flexible and resistant to climatic changes. They will not chip, crack or peel once dry. They have excellent adhesion with the ability to perform on any surface prepared for water-based paints, such as:

- Paper
- Canvas
- Wood Panels
- Metal



**Arylide Yellow Light**  
Jaune arylide clair

PY 3  
Semi-Opaque / XXX  
Series 1



**Arylide Yellow Medium**  
Jaune arylide moyen

PY 74  
Semi-Opaque / XXX  
Series 3



**Arylide Yellow Deep**  
Jaune arylide foncé

PY 65  
Semi-Opaque / XXX  
Series 5



**Bismuth Yellow Light**  
Jaune bismuth clair

PY 184  
Opaque / XXXX  
Series 9



**Bismuth Yellow Medium**  
Jaune bismuth moyen

PY 184  
Opaque / XXXX  
Series 9



**Bismuth Yellow Deep**  
Jaune bismuth foncé

PY 184  
Opaque / XXXX  
Series 9



**C.P. Cadmium Yellow Light**  
C.P. Jaune cadmium clair

PY 35  
Opaque / XXXX  
Series 8



**C.P. Cadmium Yellow Medium**  
C.P. Jaune cadmium moyen

PY 35  
Opaque / XXXX  
Series 8



**C.P. Cadmium Yellow Deep**  
C.P. Jaune cadmium foncé

PY 35  
Opaque / XXXX  
Series 8



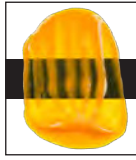
**Cadmium Yellow Medium Hue**  
Jaune cadmium moyen teint

PY 74 PY 65 PW 6  
Semi-Opaque / XXX  
Series 3



**Primary Yellow**  
Jaune primaire

PY 74 PW 6  
Semi-Opaque / XXX  
Series 2



**Indian Yellow**  
Jaune indien

PY 110  
Transparent / XXXX  
Series 7



**Golden Yellow**  
Jaune doré

PO 48 PY 150  
Transparent / XXXX  
Series 7



**Naphthol Orange**  
Orange naphthol

PY 65 PR 112  
Semi-Opaque / XXX  
Series 5



**Naphthol Red Light**  
Rouge naphthol clair

PR 112  
Semi-Opaque / XXX  
Series 5



**Naphthol Red Medium**  
Rouge naphthol moyen

PR 170  
Semi-Opaque / XXX  
Series 5



**C.P. Cadmium Orange**  
C.P. Orange cadmium

PO 20  
Opaque / XXXX  
Series 9



**C.P. Cadmium Red Light**  
C.P. Rouge cadmium clair

PR 108  
Opaque / XXXX  
Series 9



**C.P. Cadmium Red Medium**  
C.P. Rouge cadmium moyen

PR 108  
Opaque / XXX  
Series 9



**C.P. Cadmium Red Deep**  
C.P. Rouge cadmium foncé

PR 108  
Opaque / XXXX  
Series 9



**Cadmium Red Medium Hue**  
Rouge cadmium moyen teint

PR 170 PY 74  
Semi-Opaque / XXX  
Series 5



**Trans. Permanent Orange**  
Orange transparent permanent

PO 71  
Transparent / XXXX  
Series 6



**Trans. Permanent Red Light**  
Rouge permanent trans. clair

PY 110 Q Scarlet  
Transparent / XXXX  
Series 6



**Trans. Pyrrole Red Medium**  
Rouge trans. pyrrole moyen

PR 254  
Transparent / XXXX  
Series 6



**Pyrrole Orange**  
Orange pyrrole

PO 73  
Opaque / XXXX  
Series 8



**Pyrrole Red Light**  
Rouge pyrrole clair

PR 255  
Opaque / XXXX  
Series 9



**Pyrrole Red Medium**  
Rouge pyrrole moyen

PR 254  
Opaque / XXXX  
Series 9



**Primary Magenta**  
Magenta primaire

PV 19 PW 6  
Semi-Opaque / XXXX  
Series 6



**Magenta Light**  
Magenta clair

PW 6 PR 122  
Semi-Opaque / XXXX  
Series 3



**Alizarin Crimson Hue**  
Alizarin cramoisie teint

PR 170 PR 101 PV 23  
Transparent / XXXX  
Series 3



**Permanent Crimson**  
Cramoisie permanent

PR 122 PR 101  
Transparent / XXXX  
Series 7



**Burnt Crimson**  
Cramoisie brûlée

PO 48 PR 254  
Transparent / XXXX  
Series 7



**Permanent Maroon**  
Marron permanent

PV 19 PR 101 PB 15:3  
Transparent / XXXX  
Series 5



**Quinacridone Magenta**  
Magenta quinacridone

PR 122  
Transparent / XXXX  
Series 7



**Quinacridone Red**  
Rouge quinacridone

PV 19  
Transparent / XXXX  
Series 6



**Quinacridone Scarlet**  
Ecarlate quinacridone

PR 202 PR 254  
Transparent / XXXX  
Series 7



**Quinacridone Violet**  
Violet quinacridone

PV 19  
Transparent / XXXX  
Series 6



**Brilliant Purple**  
Pourpre brillant

PW 6 PV 19 PV 23  
Semi-Opaque / XXXX  
Series 3



**Dioxazine Violet**  
Violet dioxazine

PV 23  
Transparent / XXXX  
Series 6



**Quiller Violet**  
Violet quiller

PB 15:1 PV 29  
Transparent / XXXX  
Series 6



**Ultra Violet Red Shade**  
Violet outremer nuance rouge

PV 15  
Transparent / XXXX  
Series 3



**Ultra Violet Blue Shade**  
Violet Outremer nuance bleu

PV 15  
Transparent / XXXX  
Series 3



**Prussian Blue Hue**  
Bleu prusse teint

PB 15:1 PV 23  
Transparent / XXXX  
Series 4



**Ultramarine Blue Classic**  
Bleu outremer classique

PB 29  
Transparent / XXXX  
Series 2



**Ultramarine Blue Modern**  
Bleu outremer moderne

PB 29 PB 15:3  
Transparent / XXXX  
Series 2



**Manganese Blue Hue**  
Bleu manganèse teint

PW 6 PB 15:3  
Semi-Opaque / XXXX  
Series 1



**Cerulean Blue**  
Bleu cérulean

PB 36:1  
Opaque / XXXX  
Series 8



**Cerulean Blue Hue**  
Bleu cérulean teint

PW 6 PB 29 PB 15:3  
Opaque / XXXX  
Series 1



**Primary Cyan**  
Cyan primaire

PB 15:3 PW 6  
Semi-Opaque / XXXX  
Series 2



**Phthalo Blue Red Shade**  
Bleu phthalo nuance rouge

PB 15:1  
Transparent / XXXX  
Series 4



**Phthalo Blue Green Shade**  
Bleu phthalo nuance vert

PB 15:3  
Transparent / XXXX  
Series 4



**Phthalo Turquoise Light**  
Turquoise phthalo clair

PW 6 PG 7 PB 15:3  
Semi-Opaque / XXXX  
Series 2



**Phthalo Turquoise**  
Turquoise phthalo

PB 15:3 PG 7  
Transparent / XXXX  
Series 4



**Phthalo Green Blue Shade**  
Vert phthalo nuance bleu

PG 7  
Transparent / XXXX  
Series 5





**Phthalo Green Yellow Shade**  
Vert phthalo nuance jaune

PG 36  
Transparent / XXXX  
Series 5



**Cobalt Blue Hue**  
Bleu cobalt teint

PB 29 PW 6 PB 15:3  
Semi-Opaque / XXXX  
Series 2



**Cobalt Blue**  
Bleu cobalt

PB 28  
Semi-Opaque / XXXX  
Series 9



**Cobalt Teal**  
Sarcelle cobalt

PG 50 PW 6  
Opaque / XXXX  
Series 9



**Cobalt Green**  
Vert cobalt

PG 26  
Semi-Opaque / XXXX  
Series 9



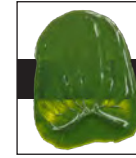
**Permanent Green Light**  
Vert permanent clair

PY 3 PG 7  
Semi-Opaque / XXX  
Series 4



**Green Gold**  
Or vert

PY 150 PY 3 PG 36  
Transparent / XXXX  
Series 7



**Golden Green**  
Vert doré

PY 150 PG 36  
Transparent / XXXX  
Series 7



**Viridian Hue**  
Vert émeraude teint

PG 7 PBr 7  
Semi-Opaque / XXXX  
Series 3



**Sap Green Light**  
Vert sève clair

PY 42 PG 7  
Transparent / XXXX  
Series 5



**Sap Green**  
Vert sève

PR 101 PG 7  
Transparent / XXXX  
Series 4



**Chrome Oxide Green**  
Vert oxyde de chrome

PG 17  
Opaque / XXXX  
Series 4



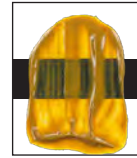
**Naples Yellow Hue**  
Jaune naples teint

PW 6 PY 42 PR 101  
Opaque / XXXX  
Series 1



**Yellow Oxide**  
Oxyde jaune

PY 42  
Opaque / XXXX  
Series 1



**Transparent Yellow Oxide**  
Oxyde jaune transparent

PY 42  
Transparent / XXXX  
Series 4



**Nickel Azo Yellow**  
Jaune azo nickel

PY 150  
Transparent / XXXX  
Series 7



**Raw Sienna**  
Terre de sienne naturelle

PBr 7  
Semi-Opaque / XXXX  
Series 1



**Burnt Sienna**  
Terre de sienne brûlée

PBr 7  
Semi-Opaque / XXXX  
Series 1



**Red Oxide**  
Oxyde rouge

PR 101  
Opaque / XXXX  
Series 1



**Transparent Red Oxide**  
Oxyde rouge transparent

PR 101  
Transparent / XXXX  
Series 5



**Transparent Gold Oxide**  
Oxyde or transparent

PR 101 PY 110  
Transparent / XXXX  
Series 5



**Golden Orange**  
Orange doré

PO 48 QScarlet Pbk 7  
Transparent / XXXX  
Series 7



**Transparent Brown**  
Brun transparent

PR 101 Pbk 7  
Transparent / XXXX  
Series 6



**Sepia**  
Sépia

PR 101 PG 7  
Transparent / XXXX  
Series 3



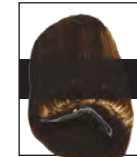
**Raw Umber**  
Terre d'ombre naturelle

PBr 7  
Opaque / XXXX  
Series 1



**Burnt Umber**  
Terre d'ombre brûlée

PBr 7  
Opaque / XXXX  
Series 1



**Van Dyke Brown**  
Van Dyke brun

PBr 7  
Semi-Opaque / XXXX  
Series 4



**Titanium White**  
Blanc titane

PW 6  
Opaque / XXXX  
Series 1



**Warm White**  
Blanc chaud

PW 6  
Opaque / XXXX  
Series 1



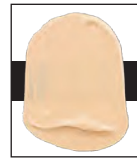
**Zinc Mixing White**  
Zinc mélange blanc

PW 4  
Semi-Opaque / XXXX  
Series 1



**Unbleached Titanium**  
Titane écru

PW 6  
Opaque / XXXX  
Series 1



**Red Oxide Tint**  
Teinte d'oxyde rouge

PW 6 PY 42 PR 101  
Opaque / XXXX  
Series 1



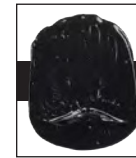
**Neutral Grey**  
Gris neutre

Pbk 11 PW 6 PBr 7  
Opaque / XXXX  
Series 1



**Graphite Grey**  
Gris graphite

Pbk 10  
Semi-Opaque / XXXX  
Series 3



**Paynes Grey**  
Gris Payne

Pbk7 PB 15:3 PV 23  
Opaque / XXXX  
Series 2



**Ivory Black**  
Noir ivory

Pbk 9  
Semi-Opaque / XXXX  
Series 1



**Mars Black**  
Noir mars

Pbk 11  
Opaque / XXXX  
Series 1



**Carbon Black**  
Noir carbon

Pbk 7  
Opaque / XXXX  
Series 1



**Micaceous Iron Oxide**  
Oxyde de fer, micacé

N/A  
Transparent / XXXX  
Series 7



**Phosphorescent**  
Phosphorescent

N/A  
Transparent / XXXX  
Series 8



**Iridescent Pearl**  
Perle iridescent

N/A  
Semi-Opaque / XXXX  
Series 4



**Iridescent Silver**  
Argent iridescent

N/A  
Semi-Opaque / XXXX  
Series 5



**Iridescent Pale Gold**  
Or iridescent clair

N/A  
Semi-Opaque / XXXX  
Series 7



**Iridescent Gold Deep**  
Or iridescent foncé

N/A  
Semi-Opaque / XXXX  
Series 7



**Liquid Mirror**  
Miroir liquide

N/A  
Opaque / XXXX  
Series 11



**Iridescent Copper**  
Cuivre iridescent

N/A  
Semi-Opaque / XXXX  
Series 7



**Iridescent Bronze**  
Bronze iridescent

N/A  
Semi-Opaque / XXXX  
Series 7



**Interference Gold**  
Or interférence

N/A  
Transparent / XXXX  
Series 7



**Interference Orange**  
Orange interférence

N/A  
Transparent / XXXX  
Series 7



**Interference Red**  
Rouge interférence

N/A  
Transparent / XXXX  
Series 7



**Interference Green**  
Vert interférence

N/A  
Transparent / XXXX  
Series 7



**Interference Blue**  
Bleu interférence

N/A  
Transparent / XXXX  
Series 7



**Interference Violet**  
Violet interférence

N/A  
Transparent / XXXX  
Series 7



**Interference Turquoise**  
Turquoise interférence

N/A  
Transparent / XXXX  
Series 7

**Tri-Art**

**HIGH VISCOSITY**



